

Reduced Glare

VECO

DOWNLIGHT SERIES

A series of downlights with a simplistic design that is available in various sizes, shapes, and finishing. Incorporating ELR's signature modular concept design, LED modules are fully interchangeable with various choices to provide optimal illumination for all kinds of spaces.



Future proof with upgradeable module



Multiple accessories options



Trim thickness < 2mm



Fixture size of a tennis ball Ø68mm

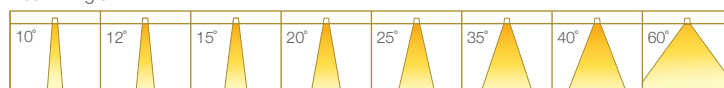
Fixture Features



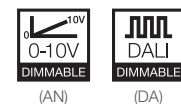
Module Colour Temperature Variation



Beam Angle



Driver Dimming Variation



VECO 3

RECESSED ROUND FIX / TILT DOWNLIGHT LUMINAIRE



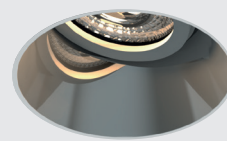
#ROUND
#FIX
#TRIM



#ROUND
#FIX
#TRIM




#ROUND
#TILT
#TRIMLESS



#ROUND
#TILT
#TRIMLESS

TECHNOLOGY AND FEATURES



ATePS
Advanced Thermal Protection System



ComfyEYE
Low Flicker, No Risk (IEEE 1789)



BEAM
Converging Optical Lens Maximising LOR



Ceiling Safe

AVAILABLE OPTIONS

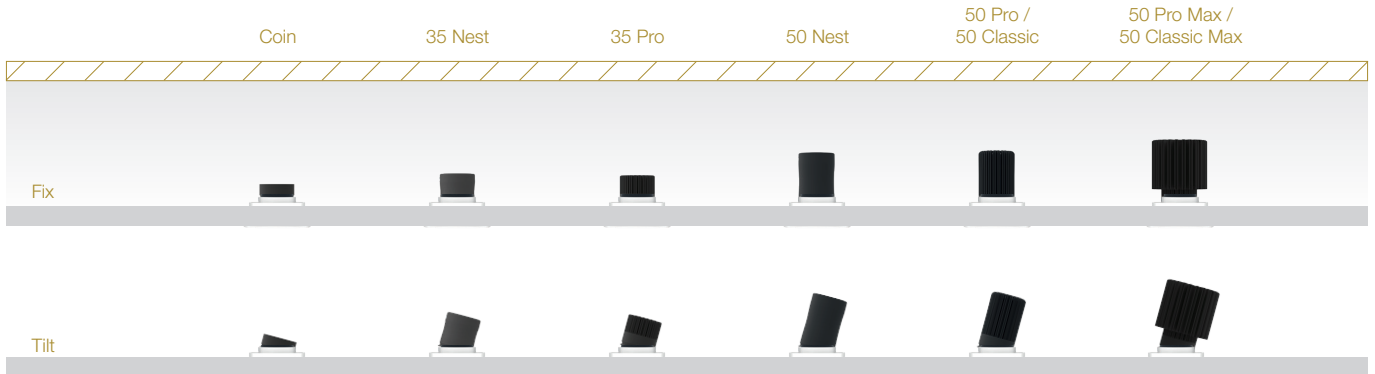
FITTURE COLOUR OPTIONS	Trim Colour Options	Reflector Colour Options				
		MATT WHITE RAL9003	MATT BLACK RAL9011	CHROME	CHROME BLACK	CHROME GOLD
MATT WHITE RAL9003						
MATT BLACK RAL9011						
ACCESSORIES	Honeycomb Anti-Glare Louvre Soft Lens Linear Spread Lens Comfort Pro IP54 MR16 Holder GU10 Holder <i>*IP54 seal accessory is valid for fix angle fixtures only.</i>					
LED MODULE	50PM/CM 50P/C 35P 50N 35N COIN 35P-HI 50N-HI 35N-HI COIN-HI MR16/GU10 10° 20° 35° 60°					
*Drivers for 24CV LED modules are sold separately. **tuneWHITE and flexiK are recommended to be paired with Soft Lens for better colour mixing effect. *Drivers for RGBW LED modules are sold separately.	SINGLE CCT 2700K 3000K 3500K 4000K 5000K ProART ProART98	50PM / 50CM / 50P / 50C / 35P / 50N / 35N / COIN 35P-HI / 50N-HI / 35N-HI / COIN-HI	<input checked="" type="checkbox"/>	<input checked="" type="checkbox"/>	<input checked="" type="checkbox"/>	<input checked="" type="checkbox"/>
	ComfySHIFT 	35P / 50N	<input checked="" type="checkbox"/>	<input checked="" type="checkbox"/>	<input checked="" type="checkbox"/>	<input checked="" type="checkbox"/>
	WARM DIM 	50P / 35P / 50N / 35N / COIN	<input checked="" type="checkbox"/>	<input checked="" type="checkbox"/>	<input checked="" type="checkbox"/>	<input checked="" type="checkbox"/>
	tuneWHITE 	50P / 50N / COIN	<input type="checkbox"/>	<input checked="" type="checkbox"/>	<input checked="" type="checkbox"/>	<input checked="" type="checkbox"/>
	flexiK 		<input type="checkbox"/>	<input type="checkbox"/>	<input checked="" type="checkbox"/>	<input checked="" type="checkbox"/>
	RGBW 	50P	<input type="checkbox"/>	<input type="checkbox"/>	<input checked="" type="checkbox"/>	<input checked="" type="checkbox"/>
DRIVER DIMMING	(ND) (PH) (AN) (DA)					

VECO 3

#ROUND
#FIX
#TILT
#TRIM
#TRIMLESS

SPECIFICATIONS

FIXTURE	
Family Type	Veco series
Fixture Colours	Matt white, matt black
Reflector Colours	Matt white, matt black, chrome, chrome black, chrome gold
Fixture Materials	Aluminium
Accessories	Honeycomb anti-glare louvre, soft lens, linear spread lens, Comfort Pro, IP54 seal
Ingress Protection	IP40, IP54
LED MODULE & DRIVER	
Compatible LED Modules	50, 35, COIN series LED modules or MR16/GU10
Lifetime	Up to 50,000 hours L80 lamp life with LM80 tested LED chip packages
Beam Angles	10°, 20°, 35°, 60°
Colour Temperatures	2700K, 3000K, 3500K, 4000K, 5000K, ComfySHIFT, Warm Dim, tuneWHITE, flexiK, RGBW
CRI	High Efficiency (CRI~85), ProART (CRI~95), ProART98 (CRI~98)
Driver (Dimming)	Non-dim, phase (leading & trailing edge), 0-10V, DALI



DIMENSIONS (MM)					Height (h)			Height increase with accessories: Anti-Glare Louvre : Height +6 Soft Lens : Height +3 Linear Spread Lens : Height +3 Comfort Pro : Height +20
ROUND	Trim	Trimless	Fix	Tilt	Module	Fix	Tilt	
		Ø97	Ø83			50PM / 50CM:	125	130
					50P / 50C:	111	114	
					50N:	108	111	
					35P / 35N:	82	88	
					COIN:	58	67	
					50N-HI:	118	121	
					35P-HI / 35N-HI:	92	98	
					COIN-HI:	68	77	
					MR16 / GU10	82	88	

Trim: Ø90
Trimless: Ø83 cutout

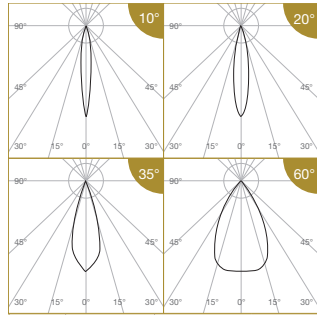
±20°

(refer to module driver dimensions)

VECO 3

PHOTOMETRICS

50 PRO



Height (m)	E(0°)	E _{max} (lx)			
		10°	20°	35°	60°
1	E(0°)	8185	5304	3119	1206
	Cone Ø (m)	0.19	0.34	0.60	1.15
2	E(0°)	2046	1326	780	301
	Cone Ø (m)	0.38	0.68	1.19	2.30
3	E(0°)	909	589	347	134
	Cone Ø (m)	0.57	1.03	1.79	3.45
4	E(0°)	512	331	195	75
	Cone Ø (m)	0.76	1.37	2.38	4.60
5	E(0°)	327	212	125	48
	Cone Ø (m)	0.95	1.71	2.98	5.75

Correction Factor:

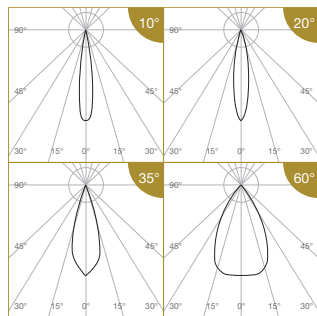
50P (10°) - f = 1.00	50P (20°, 35°, 60°) - f = 1.00
50C (10°) - f = 0.78	50C (20°, 35°, 60°) - f = 0.80
35P (10°) - f = 0.62	35P (20°, 35°, 60°) - f = 0.71
50N (10°) - f = 0.58	50N (20°, 35°, 60°) - f = 0.63
35N (10°) - f = 0.42	35N (20°, 35°, 60°) - f = 0.47
COIN (10°) - f = 0.35	COIN (20°, 35°, 60°) - f = 0.38
50PM (10°) - f = 1.69	50PM (20°, 35°, 60°) - f = 1.73
50CM (10°) - f = 1.37	50CM (20°, 35°, 60°) - f = 1.40
50P-24CV (10°) - f = 0.75	50P-24CV (20°, 35°, 60°) - f = 0.70
50C-24CV (10°) - f = 0.62	50C-24CV (20°, 35°, 60°) - f = 0.57
35P-24CV (10°) - f = 0.48	35P-24CV (20°, 35°, 60°) - f = 0.49
COIN-24CV (10°) - f = 0.28	COIN-24CV (20°, 35°, 60°) - f = 0.27

ELR LED Module				50P	50C	35P	50N	35N	COIN	50PM	50CM
LED Power				12W	10W	8W	7.5W	5.5W	4.5W	21W	17W
System Power				15.2W	12.8W	11W	10W	7.5W	6W	25W	21W
Luminous Flux (lm)	Type	Beam Angle	CRI								
	Single CCT (3000K)	10°	High Efficiency Ra-85	1079	847	672	623	457	374	1826	1477
			ProART Ra-95	917	720	572	530	388	318	1552	1256
			ProART98 Ra-98	755	593	471	436	320	261	1278	1034
		20°	High Efficiency Ra-85	1395	1116	995	884	651	530	2418	1953
			ProART Ra-95	1186	949	846	751	553	451	2055	1660
			ProART98 Ra-98	977	781	697	618	456	371	1693	1367
	35°	High Efficiency Ra-85	1410	1128	1006	893	658	536	2444	1974	
		ProART Ra-95	1199	959	855	760	559	456	2077	1678	
		ProART98 Ra-98	987	790	704	625	461	375	1711	1382	
	60°	High Efficiency Ra-85	1440	1152	1027	912	672	547	2496	2016	
ProART Ra-95		1224	979	874	776	571	466	2122	1714		
ProART98 Ra-98		1008	806	719	638	470	383	1747	1411		
Input Power (24CV)				12W	10W	8W			4.5W		
Luminous Flux (lm)	Type	Beam Angle	CRI								
	24CV Single CCT (3000K)	10°	High Efficiency Ra-85	805	664	523			307		
			ProART Ra-95	685	564	445			261		
			ProART98 Ra-98	564	465	366			215		
		20°	High Efficiency Ra-85	977	800	688			381		
			ProART Ra-95	830	680	585			325		
			ProART98 Ra-98	684	560	482			267		
	35°	High Efficiency Ra-85	987	808	696			385			
		ProART Ra-95	839	687	591			328			
		ProART98 Ra-98	691	566	487			270			
	60°	High Efficiency Ra-85	1008	826	710			394			
ProART Ra-95		857	702	604			335				
ProART98 Ra-98		706	578	497			276				

Data are based on 3000K (ProART CRI-95). Nominal data of 2700K and 3500K are shared with 3000K. Higher CCT of 4000K and 5000K will have a nominal data value of 5% higher than published. (f = 1.05)
 High Efficiency CRI-85 will have a nominal data value of 15% higher than published. (f = 1.17)
 ProART98 CRI-98 will have a nominal data value of 18% lower than published. (f = 0.82)

Nominal CRI-85, equals to Ra>80-87, R9>0
 Nominal CRI-95, equals to Ra>90-97, R9>50
 Nominal CRI-98, equals to Ra>97-99, R9>93

35 PRO ComfySHIFT



Height (m)	E(0°)	E _{max} (lx)			
		10°	20°	35°	60°
1	E(0°)	4295	3536	2079	804
	Cone Ø (m)	0.27	0.34	0.60	1.15
2	E(0°)	1074	884	520	201
	Cone Ø (m)	0.53	0.68	1.19	2.30
3	E(0°)	477	393	231	89
	Cone Ø (m)	0.80	1.03	1.79	3.45
4	E(0°)	268	221	130	50
	Cone Ø (m)	1.07	1.37	2.38	4.60
5	E(0°)	172	141	83	32
	Cone Ø (m)	1.33	1.71	2.98	5.75

Correction Factor: 35P CS - f = 1.00
 50N CS - f = 0.94

ELR LED Module				35P	50N
LED Power				8W	7.5W
System Power				11W	10W
Luminous Flux (lm)	Type	Beam Angle	CRI		
	ComfySHIFT (3100K)	10°	ProART Ra-95	706	664
				791	744
				799	752
				816	768

Data are based on maximum output at 3100K.
 Nominal CRI-95, equals to Ra>90-97, R9>50

VECO 3

PHOTOMETRICS



50 PRO WARM DIM

Height (m)	Emax (lx)	Emax (lx)				ELR LED Module																
		10°	20°	35°	60°	50P	35P	50N	35N	COIN												
1	E(0°)	6469	5325	3131	1211	LED Power																
	Cone Ø (m)	0.27	0.34	0.60	1.15	System Power																
2	E(0°)	1617	1331	783	303	Luminous Flux (lm)	Type	Beam Angle	CRI	50P	35P	50N	35N	COIN								
	Cone Ø (m)	0.53	0.68	1.19	2.30																	
3	E(0°)	719	592	348	135										Warm Dim (3100K)	10°	ProART Ra-95	1062	706	664	490	398
	Cone Ø (m)	0.80	1.03	1.79	3.45													1190	791	744	549	446
4	E(0°)	404	333	196	76													20°	1203	799	752	555
	Cone Ø (m)	1.07	1.37	2.38	4.60	35°	1229	816	768	566	461											
5	E(0°)	259	213	125	48		60°															
	Cone Ø (m)	1.33	1.71	2.98	5.75																	

Data are based on maximum output at 3100K.
Nominal CRI-95, equals to Ra>90-97, R9>50

Correction Factor: 50P WD - f = 1.00
35P WD - f = 0.66
50N WD - f = 0.63
35N WD - f = 0.46
COIN WD - f = 0.38

50 PRO tuneWHITE/flexiK

Height (m)	Emax (lx)	Emax (lx)			ELR LED Module												
		20°	35°	60°	50P	50N	COIN										
1	E(0°)	4160	2446	946	LED Power												
	Cone Ø (m)	0.34	0.60	1.15	System Power												
2	E(0°)	1040	612	236	Luminous Flux (lm)	Type	Beam Angle	CRI	50P	50N	COIN						
	Cone Ø (m)	0.68	1.19	2.30													
3	E(0°)	462	272	105								tuneWHITE/flexiK (4000K / 6500K)	20°	ProART Ra-95	930	558	335
	Cone Ø (m)	1.03	1.79	3.45											940	564	338
4	E(0°)	260	153	59											35°	960	576
	Cone Ø (m)	1.37	2.38	4.60	60°												
5	E(0°)	166	98	38													
	Cone Ø (m)	1.71	2.98	5.75													

Data are based on maximum output at highest CCT (4000K / 6500K).
2700K will have a nominal data value of 10% lower than published. (f = 0.90)
1800K will have a nominal data value of 30% lower than published. (f = 0.70)
Nominal CRI-95, equals to Ra>90-97, R9>50

Correction Factor: 50P TW / FK - f = 1.00
50N TW / FK - f = 0.60
COIN TW / FK - f = 0.36

50 PRO RGBW

Height (m)	Emax (lx)	Emax (lx)		ELR LED Module								
		35°	60°	50P								
1	E(0°)	1480	572	LED Power								
	Cone Ø (m)	0.60	1.15	System Power								
2	E(0°)	370	143	Luminous Flux (lm)	Type	Beam Angle	CRI	50P				
	Cone Ø (m)	1.19	2.30									
3	E(0°)	164	64						RGBW	35°	N/A	569
	Cone Ø (m)	1.79	3.45									581
4	E(0°)	93	36									60°
	Cone Ø (m)	2.38	4.60									
5	E(0°)	59	23									
	Cone Ø (m)	2.98	5.75									

Data are based on maximum output of all 4 RGBW channels.

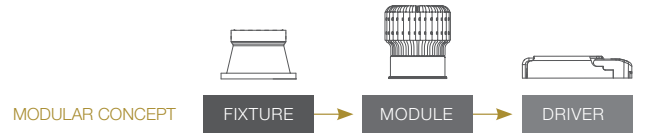
35 PRO HIGH INTENSITY

Height (m)	Emax (lx)	ELR LED Module														
		35P-HI	50N-HI	35N-HI	COIN-HI											
1	E(0°)	LED Power														
	Cone Ø (m)	System Power														
2	E(0°)	Luminous Flux (lm)	Type	Beam Angle	CRI	35P-HI	50N-HI	35N-HI	COIN-HI							
	Cone Ø (m)									0.37						
3	E(0°)									Single CCT (3000K)	10°	High Efficiency Ra-85	587	552	405	329
	Cone Ø (m)											0.56	ProART Ra-95	499	469	344
4	E(0°)											679	ProART98 Ra-98	411	386	284
	Cone Ø (m)	0.74														
5	E(0°)	434														
	Cone Ø (m)	0.93														

Correction Factor: 35P-HI - f = 1.00
50N-HI - f = 0.94
35N-HI - f = 0.69
COIN-HI - f = 0.56

Reduced Glare

VECO 3



ORDERING MATRIX CHART

Fixture																								
Type	Trim Options		Shape		Angle		Colour		Reflector Colour		Accessories													
VECO-3	T	Trim	RD	Round	FX	Fix	WH	Matt White	WH	Matt White	N	None												
	X	Trimless											TL	Tilt	MB	Matt Black	MB	Matt Black	AGL	Anti-Glare Louvre				
																					CR	Chrome	SL	Soft Lens
		CG	Chrome Gold	CP	Comfort Pro	IP	IP54**	CMB	COIN Module Bracket****															
										MR16	MR16 Holder	GU10	GU10 Holder											

**IP54 seal accessory is valid for fix angle fixtures only.

****COIN Module Bracket accessory is necessary when paired with COIN LED module variants.

Single CCT LED Module					Driver		
LED Power	Beam Angle		Colour Temp	CRI	Dimming		
ELR50PM	21W	10° 10°	27 2700K	HE Ra-85	ND	Non-Dim	
ELR50CM	17W	20° 20°	30 3000K	PA ProART	PH	Phase	
ELR50P	12W	35° 35°	35 3500K	PP ProART98	AN	0-10V	
ELR50C	10W	60° 60°	40 4000K		DA	DALI	
ELR35P	8W		50 5000K				
ELR50N	7.5W						
ELR35N	5.5W						
ELRCOIN	4.5W						
ELR35P-HI	8W	NS 10°	27 2700K	HE Ra-85	ND	Non-Dim	
ELR50N-HI	7.5W		30 3000K	PA ProART	PH	Phase	
ELR35N-HI	5.5W		35 3500K	PP ProART98	AN	0-10V	
ELRCOIN-HI	4.5W		40 4000K		DA	DALI	
			50 5000K				
ELR50P-24CV	12W	10° 10°	27 2700K	HE Ra-85			
ELR50C-24CV	10W	20° 20°	30 3000K	PA ProART			
ELR35P-24CV	8W	35° 35°	35 3500K	PP ProART98			
ELRCOIN-24CV	4.5W	60° 60°	40 4000K				
			50 5000K				

*Drivers for 24CV LED modules are sold separately.

Warm Dim LED Module					Driver		
LED Power	Beam Angle		Colour Temp	CRI	Dimming		
ELR50P	12W	10° 10°	WD Warm Dim	PA ProART	PH	Phase	
ELR35P	8W	20° 20°			AN	0-10V	
ELR50N	7.5W	35° 35°			DA	DALI	
ELR35N	5.5W	60° 60°					
ELRCOIN	4.5W						

tuneWHITE LED Module					Driver		
LED Power	Beam Angle		Colour Temp	CRI	Dimming		
ELR50P	12W	20° 20°	TW1831 tuneWHITE 1800K-3100K	PA ProART	DA	DALI	
ELR50N	7.5W	35° 35°	TW1840 tuneWHITE 1800K-4000K				
ELRCOIN	4.5W	60° 60°	TW2765 tuneWHITE 2700K-6500K				

flexiK LED Module					Driver		
LED Power	Beam Angle		Colour Temp	CRI	Dimming		
ELR50P	12W	20° 20°	FK## flexiK	PA ProART	PH	Phase	
ELR50N	7.5W	35° 35°			AN	0-10V	
ELRCOIN	4.5W	60° 60°			DA	DALI	

denotes the first two digits of preferred CCT ranging from 1800K to 6500K by increment of 100K.

ComfySHIFT LED Module					Driver		
LED Power	Beam Angle		Colour Temp	CRI	Dimming		
ELR35P	8W	10° 10°	CS ComfySHIFT	PA ProART	ND	Non-Dim	
ELR50N	7.5W	20° 20°					
		35° 35°					
		60° 60°					

RGBW LED Module				
LED Power	Beam Angle		Colour Temp	
ELR50P	12W	35° 35°	RGBW Red, Green, Blue, White	
		60° 60°		

*Drivers for RGBW LED modules are sold separately.

example: VECO-3.T.RD.TL.WH.WH.AGL.ELR50P.60.27.PA.DA

*Custom RAL colour options available.